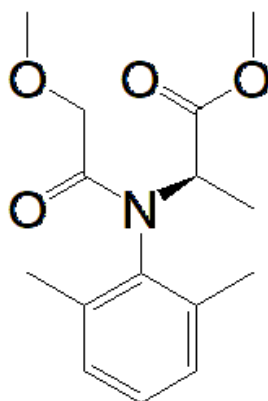


# Certificate of Analysis

## Product Information



<i>PRODUCT</i>	<b>Metalaxyl-M</b>
<i>BATCH #</i>	049-034-100
<i>ASSAY METHOD</i>	HPLC, LCMS, <sup>1</sup> H-NMR, <sup>13</sup> C-NMR
<i>REPORT DATE</i>	1/10/2023
<i>CHEMICAL NAME</i>	methyl (2R)-2-(N-(2-methoxyacetyl)-2,6-dimethylanilino)propanoate
<i>SMILES STRUCTURE</i>	<chem>CC1=C(C(=CC=C1)C)N(C(C)C(=O)OC)C(=O)COC</chem>
<i>OTHER NAMES</i>	N/A
<i>CHEMICAL FORMULA</i>	C <sub>15</sub> H <sub>21</sub> NO <sub>4</sub>
<i>MOLECULAR WEIGHT</i>	279.3 g/mol
<i>CAS REG. #</i>	70630-17-0
<i>STORAGE</i>	Ambient
<i>EXPIRATION DATE</i>	N/A
<i>NOTES</i>	N/A

## Analytical Data

TEST	METHOD	SPECIFICATION	RESULT
HPLC-UV	210 nm	N/A	100.0%
MS	ESI Positive	280.2 m/z	280.0 m/z
<sup>1</sup> H-NMR		Conforms	Conforms
<sup>13</sup> C-NMR		Conforms	Conforms
Appearance	Viscous, yellow oil		
Adjusted Purity (Wt %)	99.4% (purity determined by Corteva Agriscience)		

The producer certifies that this reference material meets the specifications stated in this certificate until the expiration date, provided it is stored unopened at the recommended conditions. All analytical data is prepared and stored following GLP guidelines.

CERTIFIED BY	CERTIFIED TITLE	CERTIFIED ON	SIGNATURE
Vitold Glinski	CEO	1/10/2023	

### Intended Use

This reference material is intended for laboratory use in analytical applications and as a quality control standard.

### Safety

Proper precautions should be observed while handling, as defined in the Materials Safety Data Sheet (MSDS).

### Storage

The product should be stored in the original packaging, sealed, and in the conditions dedicated in this certificate