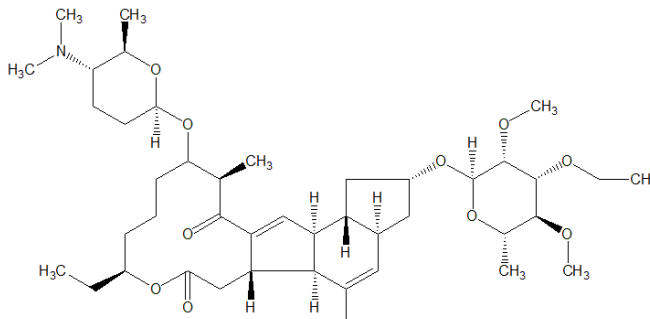


Certificate of Analysis



PRODUCT	<i>Spinetoram L</i>
BATCH #	048-010-102
ASSAY METHOD	HPLC, LCMS, ¹ H-NMR, ¹³ C-NMR
REPORT DATE	2022-09-21
CHEMICAL NAME	(1S,2S,5R,7S,9S,10S,14R,15S,19S)-15-[(2R,5S,6R)-5-(dimethylamino)-6-methyloxan-2-yl]oxy-7-[(2R,3R,4R,5S,6S)-4-ethoxy-3,5-dimethoxy-6-methyloxan-2-yl]oxy-19-ethyl-4,14-dimethyl-20-oxatetracyclo[10.10.0.02,10.05,9]docosa-3,11-diene-13,21-dione
SMILES STRUCTURE	CCC1CCCC(C(C(=O)C2=CC3C4CC(CC4C(=CC3C2CC(=O)O1)C)OC5C(C(C(C(O5)C)OC)OCC)OC)C)OC6CCC(C(O6)C)N(C)C
OTHER NAMES	
CHEMICAL FORMULA	C ₄₃ H ₆₉ NO ₁₀
MOLECULAR WEIGHT	760 g/mol
CAS REG. #	187166-15-0
STORAGE	N/A
EXPIRATION DATE	N/A
NOTES	Assay method: Phenomenex Gemini C18 in series with Gemini NX. Isocratic, 83% Ch. B, 28 min. Ch. A: Water + 2% dimethylethylamine (volume/volume) Ch. B: MeCN method provided by Corteva

Analytical Data

TEST	METHOD	SPECIFICATION	RESULT
HPLC	254 nm	>99.5%	100.00%
¹ H-NMR		Conforms	Conforms
¹³ C-NMR		Conforms	Conforms
Appearance		White, powder	

Signed: Jan Glinski, Ph.D.
 Planta Analytica, LLC
 9/21/2022

